

# Regenerating Senescent Ironbark

## Workshop Notes



**This area is covered with senescent early to mid secondary succession trees. Various eucalyptus species, acacias - especially the wattle.**

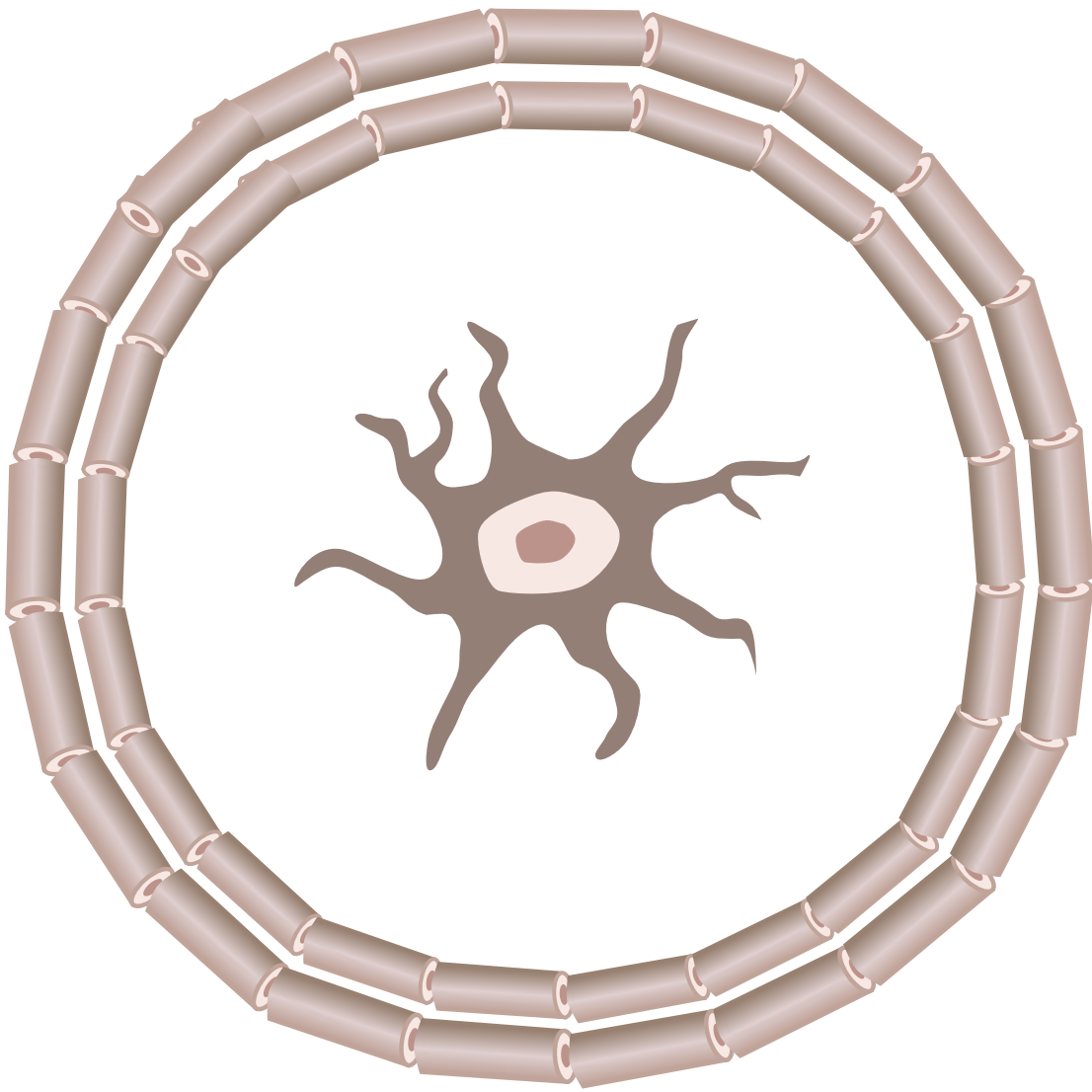
**The ecosystem has a poor water cycle and is bushfire prone.**

**The context of this job is a sawmilling block, where trees are selected and harvested for timber**

**The goal is to regenerate the land as a part of the sawmilling process. The senescence of the trees is broken by the cut and the leftover biomass is good for covering the soil and holding moisture. This will form a mosaic pattern and spread through the larger landscape, ultimately connecting together.**

**For this workshop we will select a senescent ironbark tree, cut it back and organise it into a consortium, with the goal of attaining higher species succession, bringing a cooling effect to the landscape, improving the water cycle, reducing fire risk and providing fresh food.**





**First step is to get all of the big logs, split the really big ones (lay face down) and make 2 close rings around the tree, with a diameter of 5 metres..**

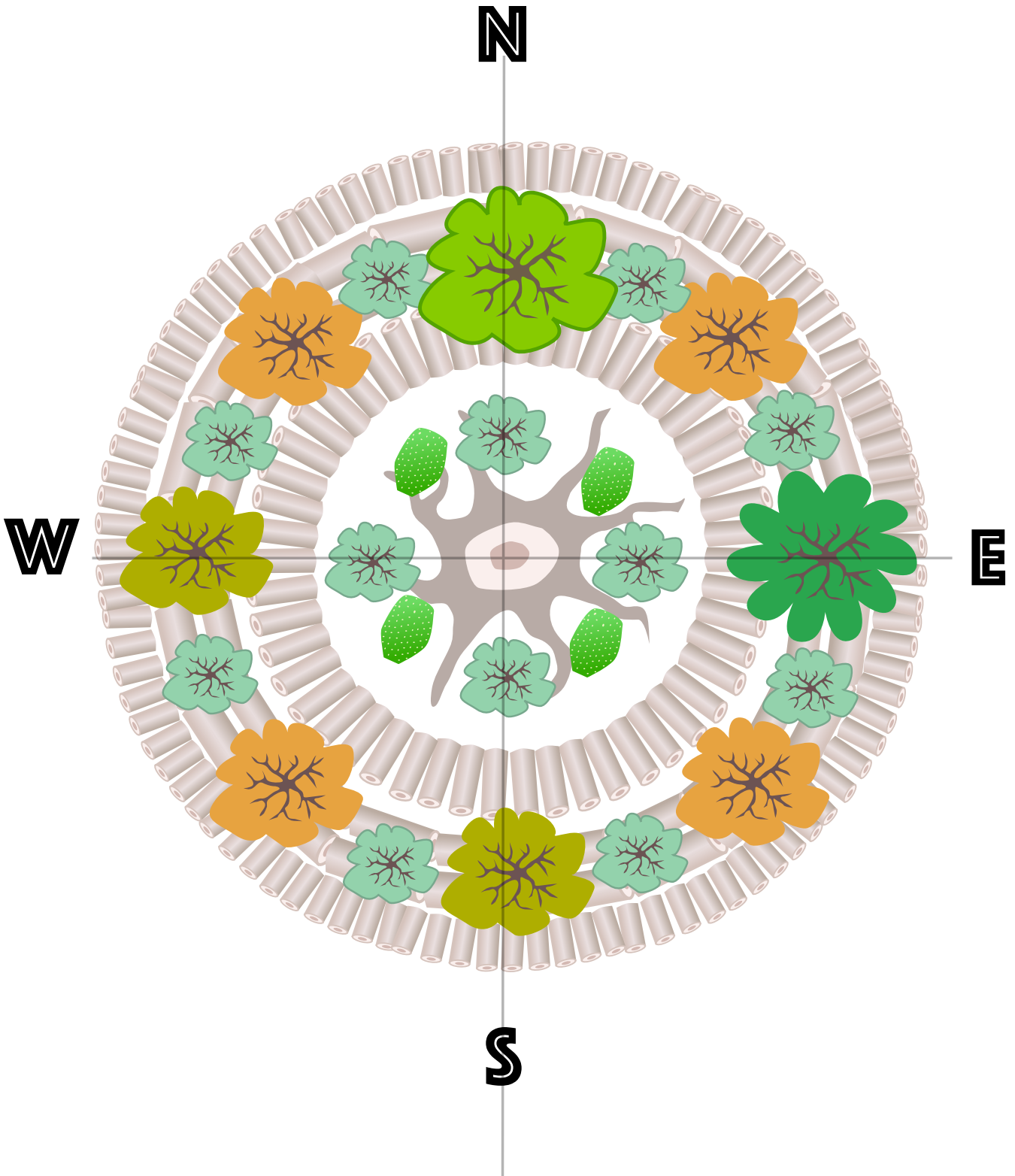
**The gap between the 2 rings is 150mm, this is where the trees and seeds are planted**

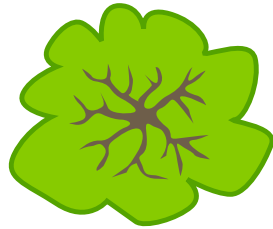


**Fill in the area outside and inside the rings with the rest of the logs and sticks, gradually working down in size until the branches with leaves go on.**

**Chop up the smaller biomass on top with the chainsaw.**

# Plant According to Aspect





Lemon



Loquat



Wattle



Orange



Opuntia



Eucalyptus

**This consortium is a coupling of medium strata and emergent strata covering the lifecycle of the citrus. The citrus (medium) combines with the eucalyptus (emergent), with the eucalyptus exiting after 4-5 years, making way for the trees from the seed bank which will provide the forest ecosystem.**

**The loquat will provide shade, biomass and fruit in the first 3-4 years. Keep cutting it back to make way for the citrus and other trees, and finally cut it out when it has no more room. The wattle will share a similar lifecycle with the loquat, keep cutting back the wattle as younger plants need space and finally cut it out as the citrus and new trees emerge from the seed bank.**

**In the beginning a vegetable crop can be grown in the ring in all of the gaps between the tree seedlings. Plants like corn, beans and zucchini are good.**

**In the centre, plant grasses with the wattles and opuntia, the ironbark may resprout. This area can be let go a bit and be cut back hard periodically between recoveries. Use a billhook to cut the biomass back out towards the trees, taking the opuntia without having to touch it.**

**The medium/emergent strata combination will use the north and east of the circle for the medium strata citrus, it will receive the morning sun and winter sun, while being protected from the west by the hardy emergent strata eucalypt. As the eucalypt are removed and new trees come, the west will be protected and taller emergent trees to the south will get winter sun.**

**White Cedar, Bottle Tree, Bat Wing Coral Tree, Albizia, Brachycinton, Tipuanu Tipu, Golden Rain Tree, Poinciana, Jacaranda, Mixed Acacia, plus many more tree species will be used in the seed bank. We must consider all species that thrive.**